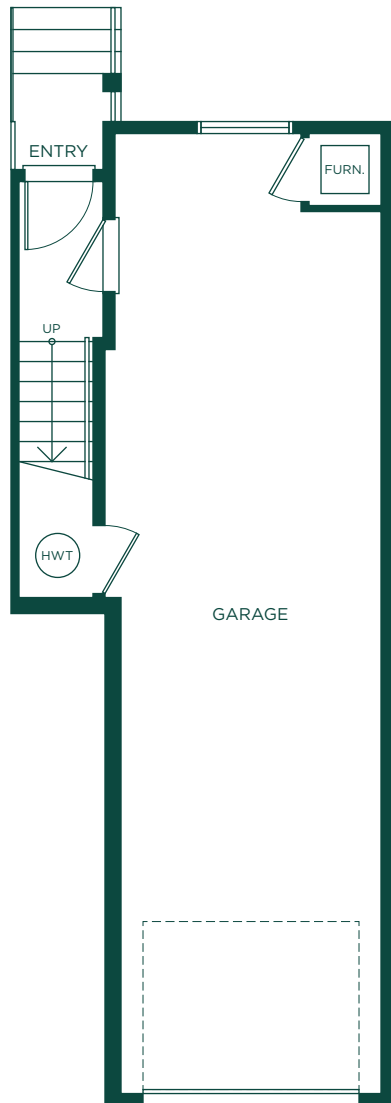


# Plan A

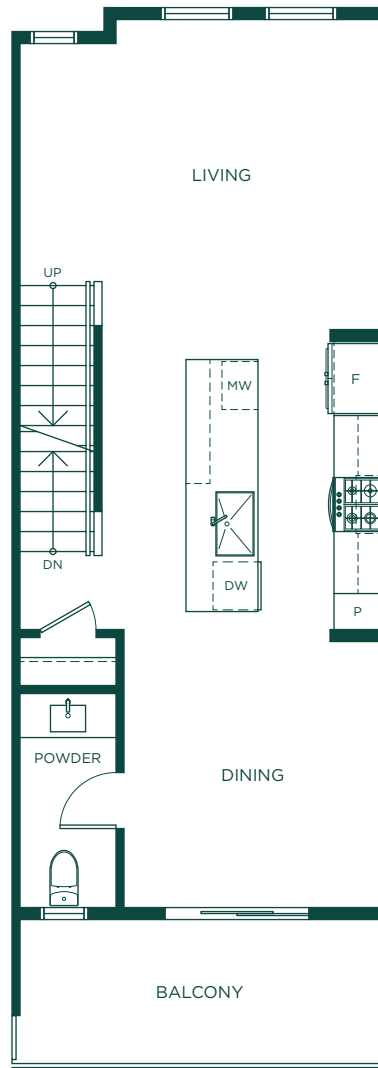
**3 BEDROOM**  
**2.5 BATH**

INT. 1,329 SQ.FT.

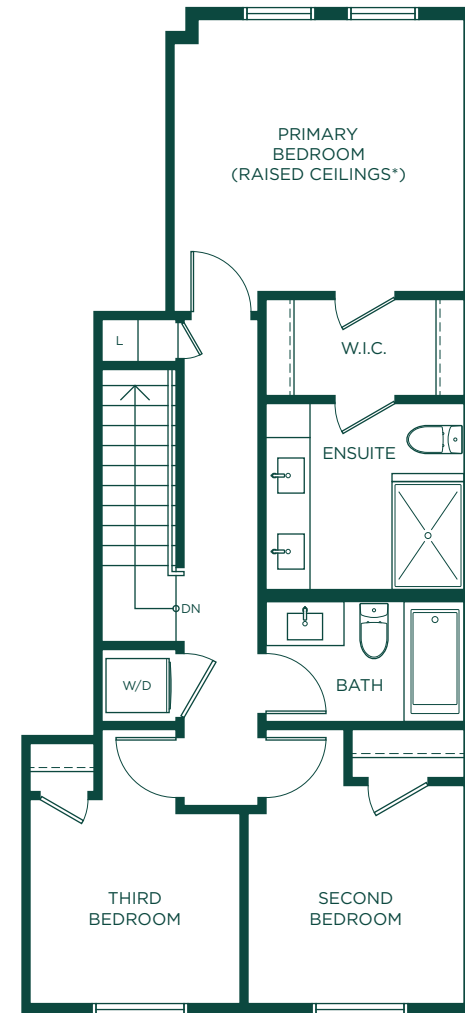
TOWNSIDE  
VILLAGE  
WILLOUGHBY



LOWER LEVEL



MAIN LEVEL



UPPER LEVEL

\*RAISED CEILINGS ARE AVAILABLE IN SELECT HOMES. FOR FURTHER DETAILS, PLEASE SEE A SALES REPRESENTATIVE AND REFER TO THE ARCHITECTURAL PLANS.

In our continuing effort to improve and maintain the high standard of the Townside Village development, the developer reserves the right to modify or change plans, specifications, features and prices without notice. Materials may be substituted with equivalent or better at the developer's sole discretion. All dimensions and sizes are approximate and are based on architectural measurements. As reverse, flipped, and/or mirrored plans occur throughout the development, please see architectural plans for the exact unit layout if material to your decision to purchase. The shelving in the ensuites is subject to location changes. Additionally, included microwave may be relocated during construction. If deemed important, please ask one of our sales staff to reference the most recent set of architectural construction drawings for dimensions and other details. Please refer to the disclosure statement for specific offering details. E.&O.E. Sales and Marketing provided by Fifth Avenue Real Estate Marketing Ltd. 604-583-2212 [www.fifthave.ca](http://www.fifthave.ca)